



# Roxtec SRC r20 GRP transit

Rectangular transit with a glass reinforced polyester frame.

The Roxtec SRC r20 GRP is a cable and pipe transit with rounded corners to reduce stress concentration and the risk of cracks around the frame. The GRP frame is laminated or glued to the composite structure and configured with Roxtec RM modules that are adaptable to cables and pipes of different diameters. It can also be configured as a blank transit providing spare capacity for future needs.



- Light-weight
- Easy to maintain and inspect

## Product characteristics



Fire rated



Watertight



Gas-tight

## Structure of installation



Composite

## Mounting type



Lamination

## Ratings & certificates

### Fire

- A-CLASS according to IMO 2010 FTP Code

### Tightness

- Gas: 1 bar (catastrophic)
- Water: 2 bar (catastrophic)

## Frame dimensions

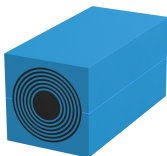
mm/kg

The frame variants below are a limited selection. For the full range of frames and configurations, please visit [roxtec.com](https://www.roxtec.com).

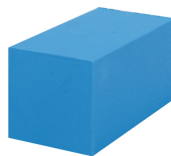
Product	Frame openings	Packing space	External dimensions WxHxD	Aperture dimensions w x h	Weight	Art. no
SRC 4x1 R20 GRP	1	120 x 120	150.5 x 189.5 x 60	156(+3/-3) x 195(+3/-3)	0.9	198826
SRC 6x1 R20 GRP	1	120 x 180	150.5 x 248 x 60	156(+3/-3) x 254(+3/-3)	1	198827

## Sealing components

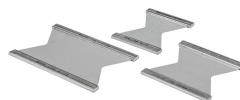
### Sealing components



RM module with Multidiameter™



RM solid compensation module



Stayplate



Lubricant



Wedge & Wedge kit

For detailed information, please visit [roxtec.com](https://www.roxtec.com).



The product information provided by Roxtec does not release the purchaser of the Roxtec system, or part thereof, from the obligation to independently determine the suitability of the products for the intended process, installation and/or use.

Roxtec gives no guarantee for the Roxtec system or any part thereof and assumes no liability for any loss or damage whatsoever, whether direct, indirect, consequential, loss of profit or otherwise, occurred or caused by the Roxtec systems or installations containing components not manufactured by an authorized manufacturer and/or occurred or caused by the use of the Roxtec system in a manner or for an application other than for which the Roxtec system was designed or intended.

Roxtec expressly excludes any implied warranties of merchantability and fitness for a particular purpose and all other express or implied representations and warranties provided by statute or common law. User determines suitability of the Roxtec system for intended use and assumes all risk and liability in connection therewith. In no event shall Roxtec be liable for indirect, consequential, punitive, special, exemplary or incidental damages or losses.

The Roxtec products are offered and sold in accordance with the conditions of the Roxtec General Terms of Sales. The latest version of the Roxtec General Terms of Sales can be downloaded from <https://www.roxtec.com/en/about-us/about-roxtec/general-terms-of-sales/>

We reserve the right to make changes to the product and technical information without further notice. Any errors in print or entry are no claims for indemnity. The content of this publication is the property of Roxtec International AB and is protected by copyright.

This document was generated on: 2025-07-02

